

ISBT WP RARE DONORS PROGRAMME

Sandra J. Nance, MS, MT(ASCP)SBB
Chair, ISBT Working Party on Rare Donors
Senior Director, Immunohematology Reference Laboratories
American Red Cross Biomedical Services

The need is constant.
The gratification is instant.
Give blood. [™]



WP: Rare Donors Scientific Programme

- National Rare Donor Program: Experience and Challenges
 - Coral Olsen – South Africa
- Regional Network Rare Donor Program: Experience and Challenges
 - Eduardo Muniz-Diaz – Spain



Working Party on Rare Donors



WP: Rare Donors Scientific Programme

- Starting a Rare Donor Program: Experience and Challenges
 - Mostafa Moghaddam – Iran
- The Global Experience: International Rare Donor Panel
 - Joyce Poole – United Kingdom



Working Party on Rare Donors



ISBT

Working Party on Rare Donors

ISBT Working Party on Rare Donors Meeting in Berlin 2010



ISBT

Working Party on Rare Donors



ISBT Working Party on Rare Donors Meeting in Cancun 2012

ISBT
CANCUN
2012

32nd International Congress of the ISBT
in joint cooperation with the 10th Congress of AMMTAC
Cancun, Mexico, July 7 - 12, 2012

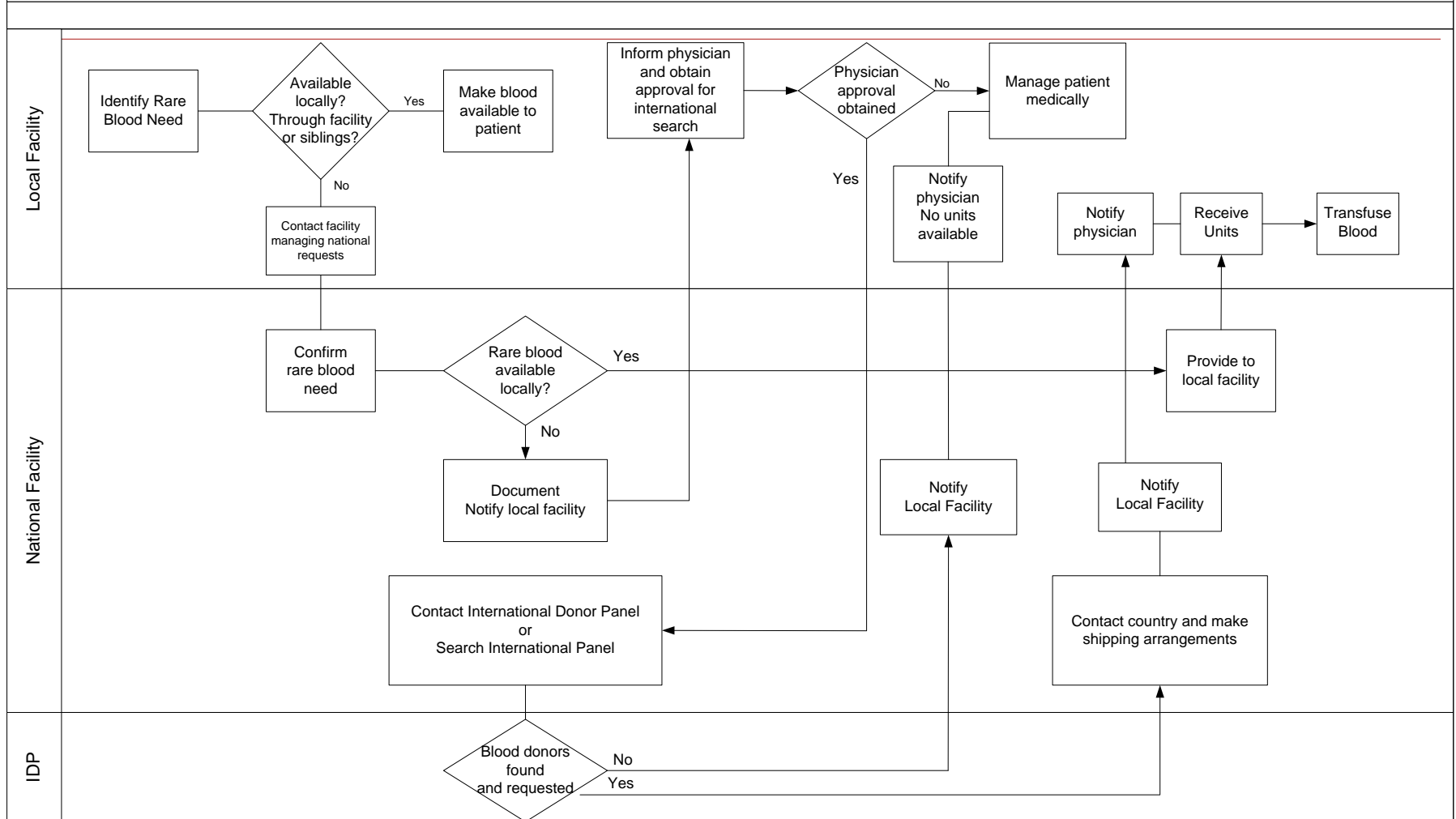


ISBT Working Party on Rare Donors Members 2012

Sandra Nance	Chair	USA	Mostafa Moghaddam	Iran
Joyce Poole	Vice Chair	UK	Eduardo Muniz-Diaz	Spain
Christine Lomas Francis	Secretary	USA	France Noizat-Pirenne	France
Marcia Novaretti	Treasurer	Brazil	Coral Olsen	South Africa
Members:			Cinzia Paccapelo	Italy
Ai Leen Ang	Singapore		Philippe Rouger	France
Masja De Haas	Netherlands		Inna Sareneva	Finland
Rita Fontão-Wendel	Brazil		Erwin Andreas Scharberg	Germany
Beat Frey	Switzerland		Yoshihiko Tani	Japan
Mindy Goldman	Canada		K Vasantha	India
Dhana Gounder	New Zealand		Inge Von Zabern	Germany
Richard Hung	Taiwan		Vered Yahalom	Israel
Hein Hustinx	Switzerland		Ziyan Zhu	China

PROCESS FLOW FOR OBTAINING RARE BLOOD

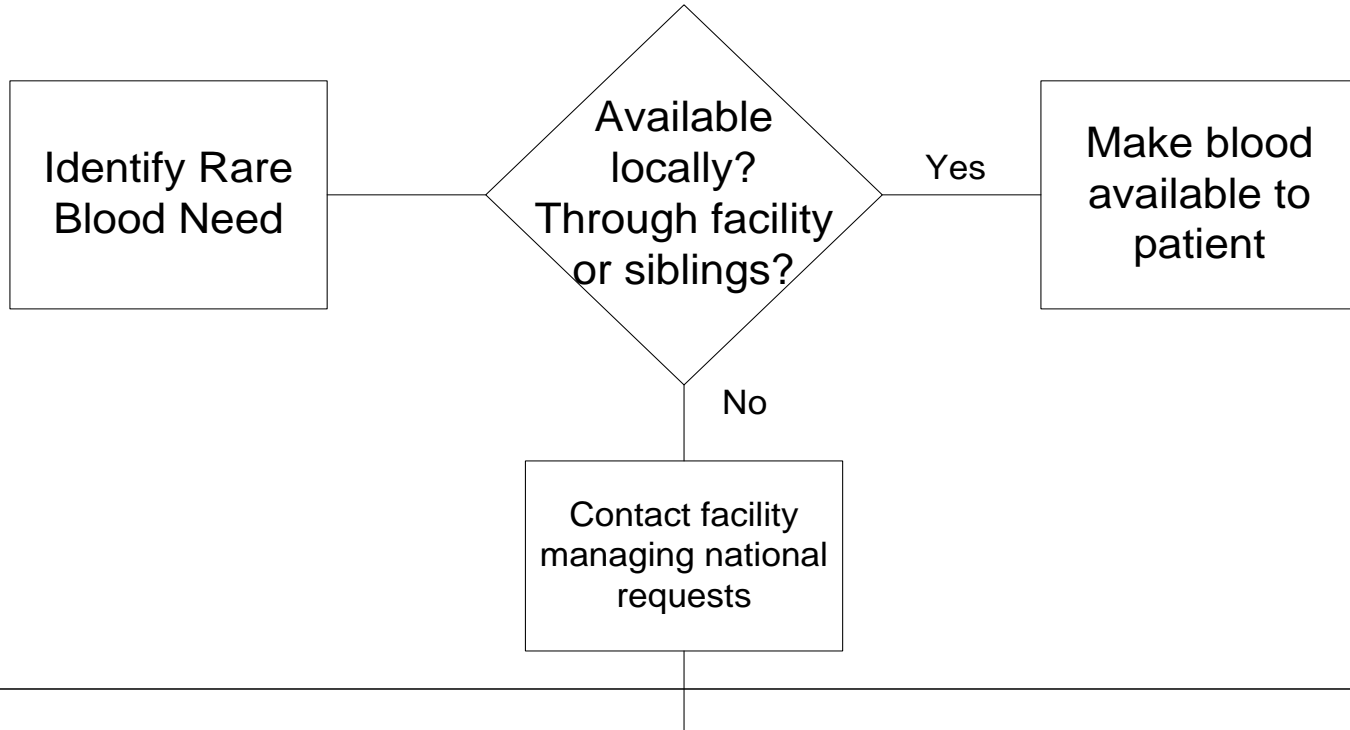
Flow Chart to Request Rare Blood from International Rare Donor Panel (IDP)



Local Facility Role

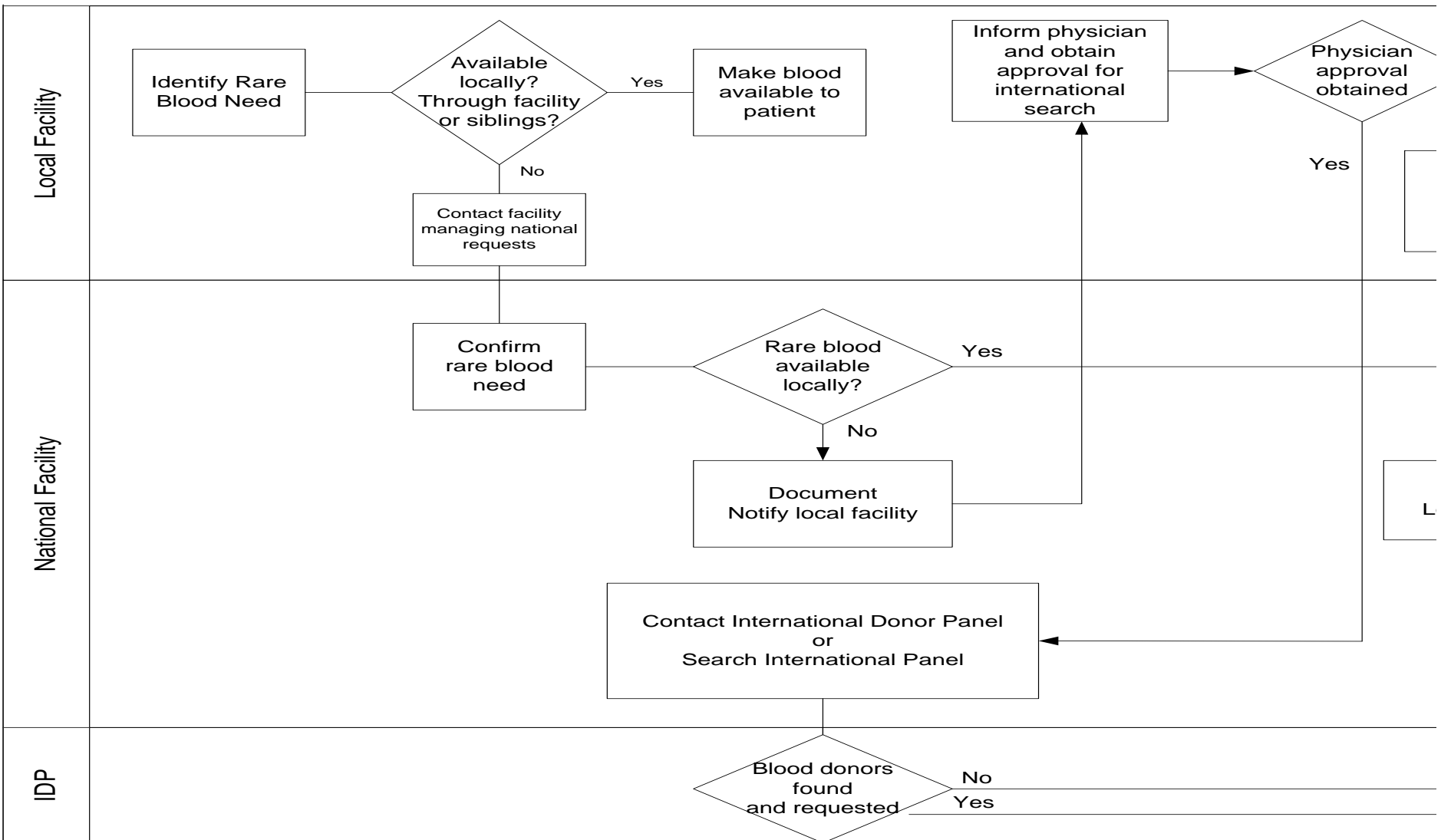
Flow Chart to Request Rare Blood from International Rare Donors

Local Facility

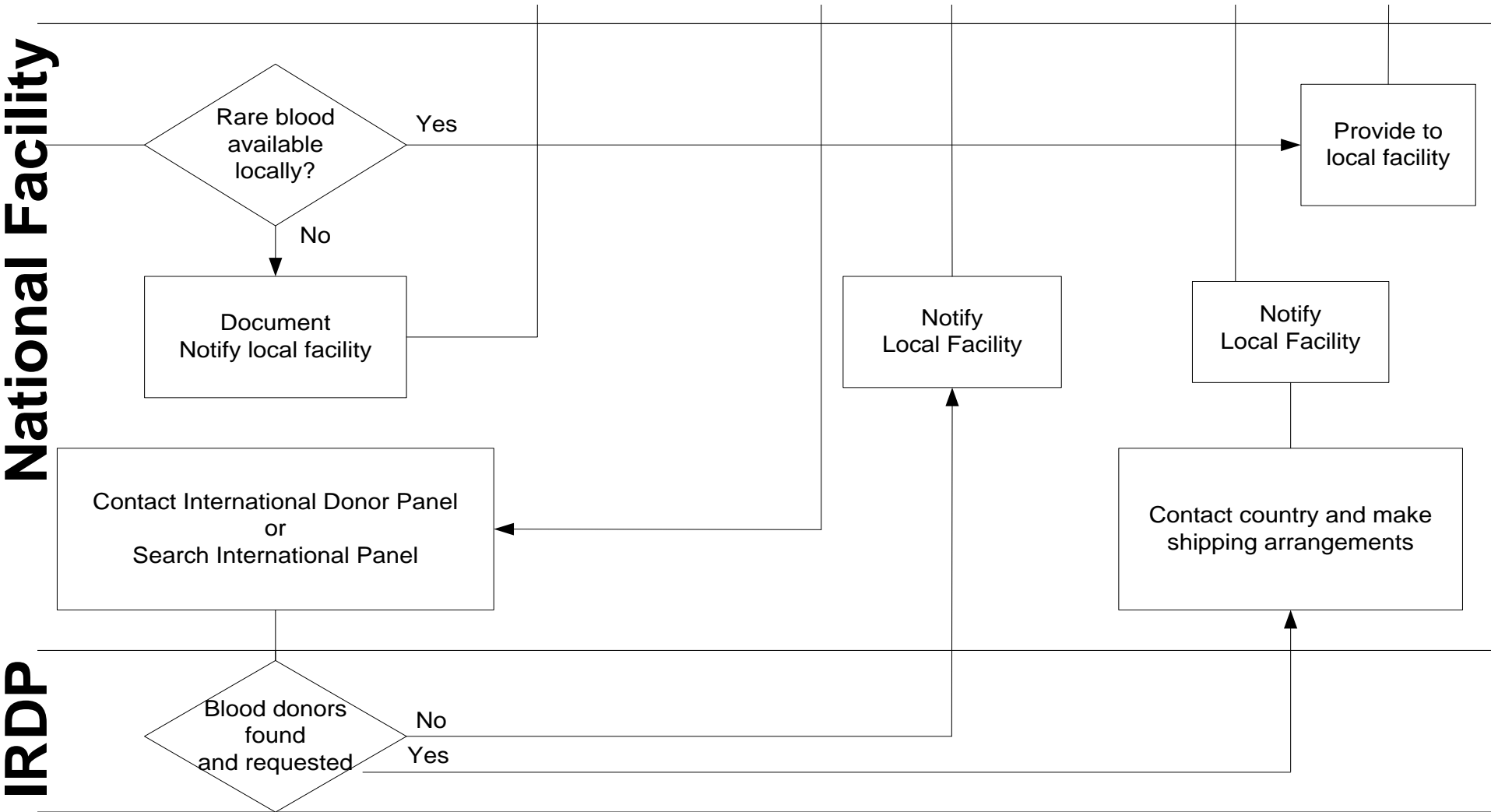


Working Party on Rare Donors

National Facility Role



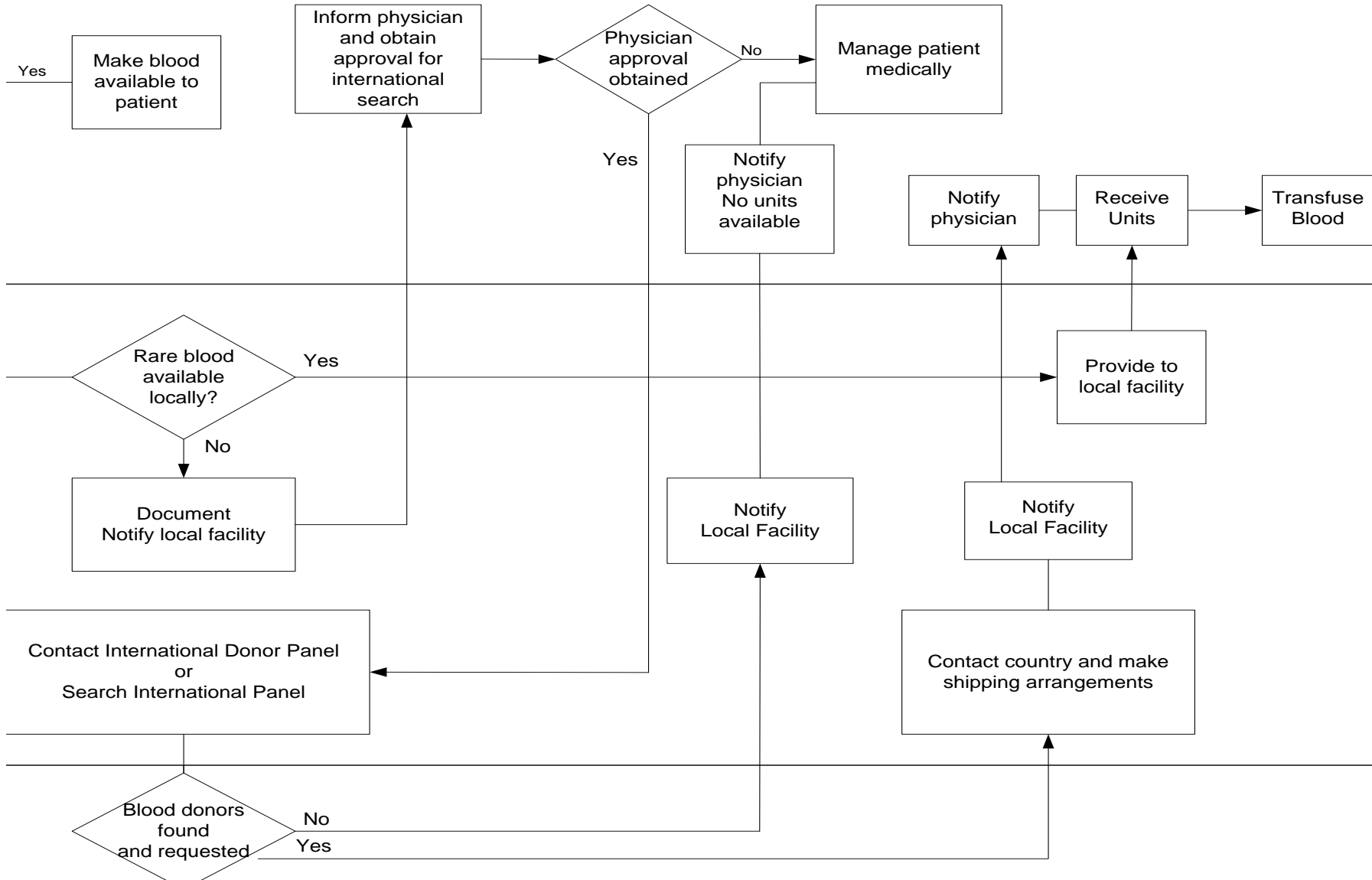
IDP Role



Local/National Facility Role

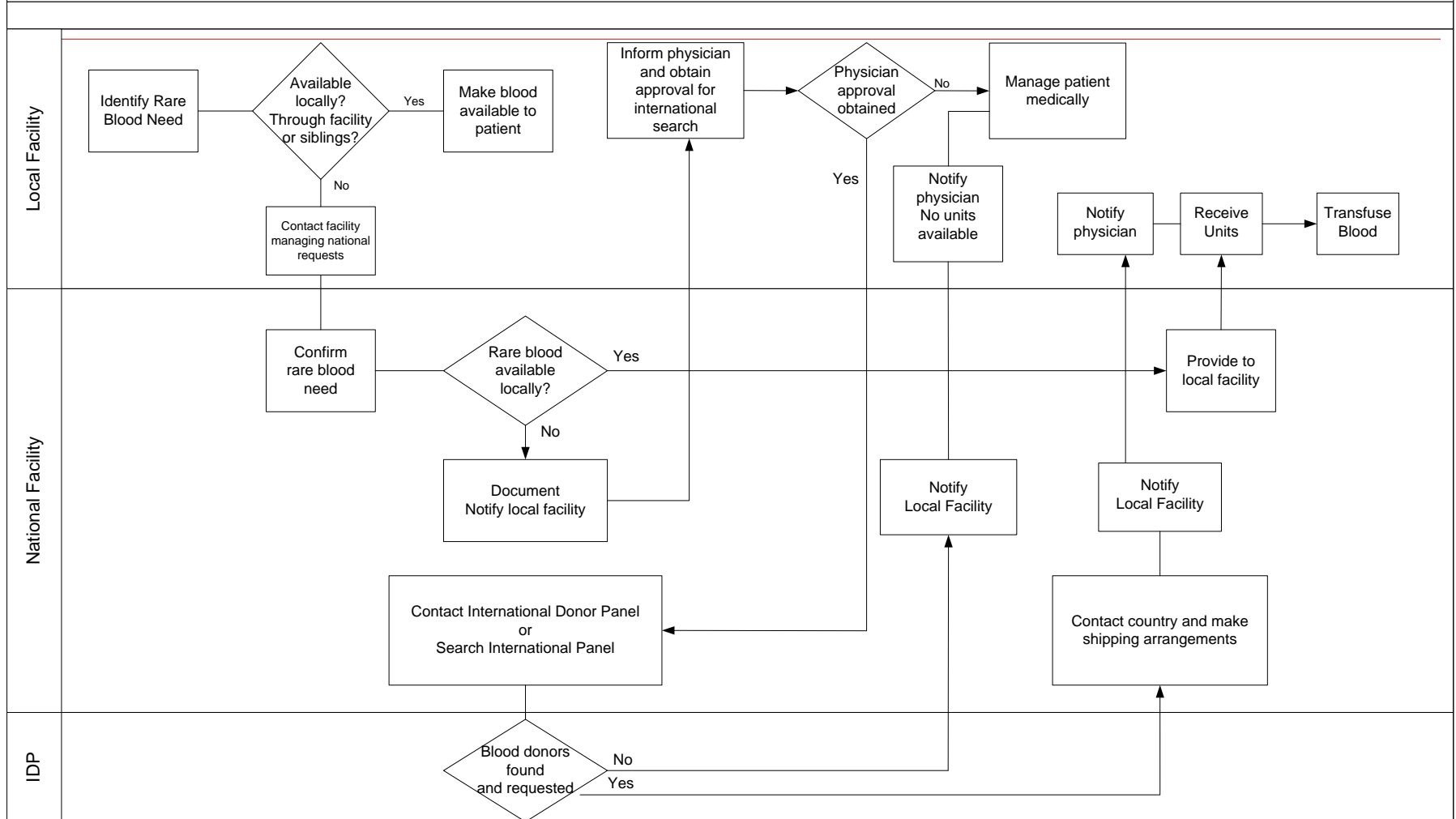
National Facility

IRDP

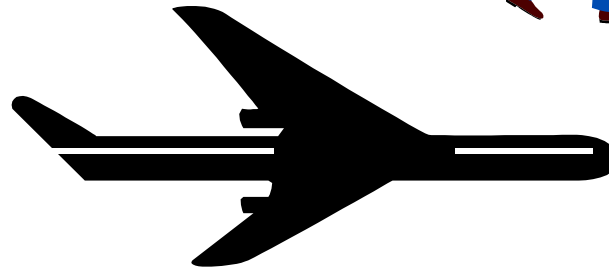
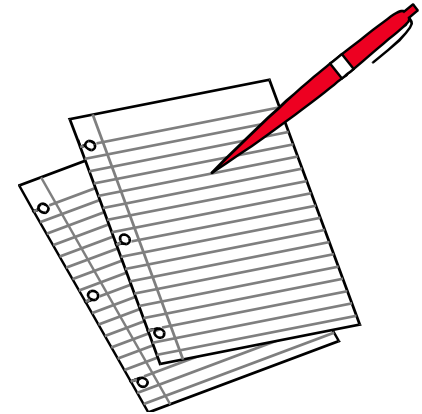
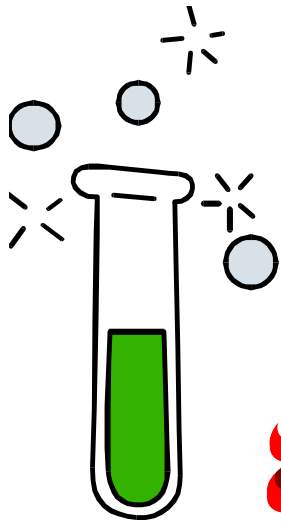


PROCESS FLOW FOR OBTAINING RARE BLOOD

Flow Chart to Request Rare Blood from International Rare Donor Panel (IDP)



Rare Donor Working Party



ISBT
CANCUN
2012

32nd International Congress of the ISBT
in joint cooperation with the 10th Congress of AMMTAC
Cancun, Mexico, July 7 - 12, 2012



Thank you to all the committed staff in centers all over the world who strive to make rare blood available any time there is a need and who stay late, come in early or on weekends and in the middle of the night to ensure antibody identifications or blood shipments are done effectively and efficiently to get blood to patients all over the globe!!

ISBT

Working Party on Rare Donors

